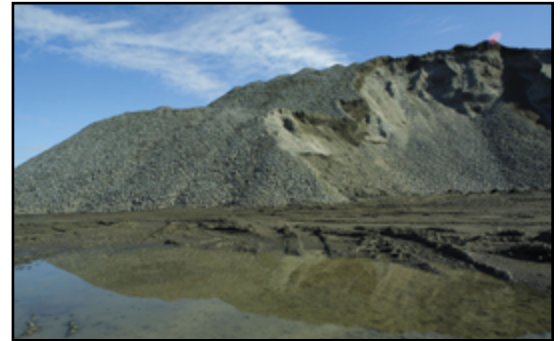
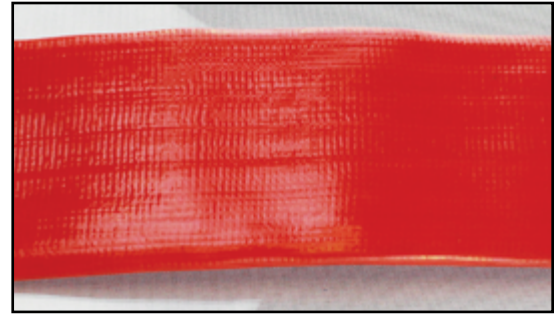
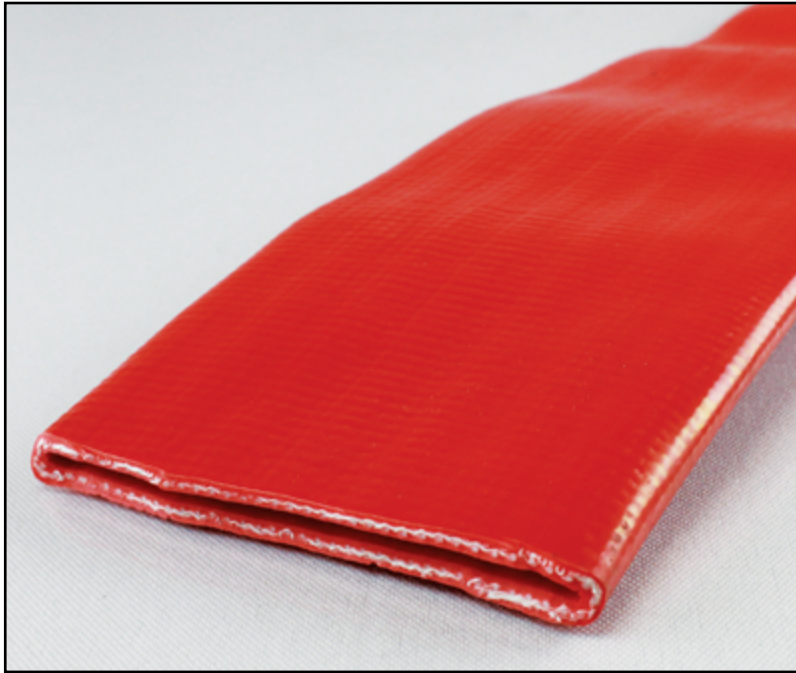


## 4515

## RED PVC WATER DISCHARGE HOSE

**HEAVY DUTY**



**CONSTRUCTION:** Tube and cover are bright red PVC. Reinforcement is knitted polyester yarn.

**TEMPERATURE:** -14°F (-26°C) to +150°F (+66°C)

**BRANDING:** None

**APPLICATION:** For water discharge in construction, agriculture and heavy duty equipment rental.

**FEATURES:**

- High WP for heavy duty applications
- Rolls flat for convenient storage
- Homogeneous construction eliminates tube and cover separation
- Maximum bonding as tube and cover extruded simultaneously

**DESIGN FACTOR:** 3:1

| Part Number      | I.D.  |        | Wall Thickness |      | Reinf.  | Max W.P. @ 68°F |      | Vacuum @ 68°F | Weight  |      | Std. Length (ft.) |
|------------------|-------|--------|----------------|------|---------|-----------------|------|---------------|---------|------|-------------------|
|                  | in.   | mm     | in.            | mm   |         | PSI             | BAR  |               | lb./ft. | KG/m |                   |
| <b>4515-1500</b> | 1-1/2 | 38.10  | 0.090          | 2.29 | Knitted | 140             | 9.65 | n/a           | 0.22    | 0.32 | 300               |
| <b>4515-2000</b> | 2     | 50.80  | 0.090          | 2.29 | Knitted | 130             | 8.96 | n/a           | 0.26    | 0.38 | 300               |
| <b>4515-2500</b> | 2-1/2 | 63.50  | 0.098          | 2.49 | Knitted | 125             | 8.61 | n/a           | 0.30    | 0.44 | 300               |
| <b>4515-3000</b> | 3     | 76.20  | 0.098          | 2.49 | Knitted | 125             | 8.61 | n/a           | 0.40    | 0.59 | 300               |
| <b>4515-4000</b> | 4     | 101.60 | 0.110          | 2.79 | Knitted | 125             | 8.61 | n/a           | 0.62    | 0.91 | 300               |
| <b>4515-6000</b> | 6     | 152.40 | 0.111          | 2.82 | Knitted | 115             | 7.92 | n/a           | 1.18    | 1.75 | 300               |
| <b>4515-8000</b> | 8     | 203.20 | 0.111          | 2.82 | Knitted | 70              | 4.82 | n/a           | 1.23    | 1.83 | 300               |

**Working pressure (W.P.) is temperature dependent. See the General Information section Table II - Pressure Re-Rating for increased Temperatures (Page 11) for more information.**

All sizes may not be stocked in all locations. Check with customer service for availability.  
We disclaim any liability for use of our products in applications other than which they are designed.